

**MP01.0.6.180**

10mm PANO MENTEŞESİ ( Kaplamasız )  
10mm PANEL HINGE ( Uncoated )



200Kg.

**MP01.2.6.180**

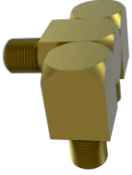
10mm PANO MENTEŞESİ ( Nikel Kaplamalı )  
10mm PANEL HINGE ( Nickel Plated )



200Kg.

**MP02.0.8.180**

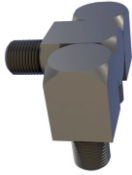
12mm PANO MENTEŞESİ ( Kaplamasız )  
12mm PANEL HINGE ( Uncoated )



250Kg.

**MP02.2.8.180**

12mm PANO MENTEŞESİ ( Nikel Kaplamalı )  
12mm PANEL HINGE ( Nickel Plated )



250Kg.

**Kullanım Alanları**

- \* Elektrik Panoları
- \* Makine Kapakları

**Malzeme**

- \* Gövde: Pirinç  
DIN 17672 CuZn39Pb3
- \* Pim : Çelik
- \* 0: Kaplama: Kaplamasız
- \* 2: Kaplama: Nikel
- \* Menteşe Dönme Açısı: 180°

**Applications**

- \* Electric Panels
- \* Machinery Covers

**Material**

- \* Body: Brass  
DIN 17672 CuZn39Pb3
- \* Pin : Steel
- \* 0: Finish: Uncoated
- \* 2: Finish: Nickel Plated
- \* Hinge Rotation Angle: 180°

