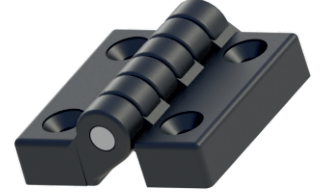


MY4848.35.0.4

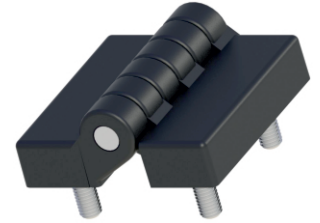
YAPRAK MENTEŞE (48*48mm-Plastik-Delikli)
LEAF HINGE (48*48mm-Polyamide-Hole)



250Kg.

MY4848.35.0.1

YAPRAK MENTEŞE (48*48mm-Plastik-Civatalı)
LEAF HINGE (48*48mm-Polyamide-With Bolt)



250Kg.

Kullanım Alanları

- * Elektrik Panoları
- * Makine Kapakları

Malzeme

- * 35: Gövde : Polyamide DIN-EN ISO 1043-1 PA6 GFR30
- * Civata: Çelik St 37
- * Pim :Çelik St 37
- * 0: Kaplama: Kaplamasız
- * Menteşe Dönme Açısı: 180 °

Applications

- * Electric Panels
- * Machinery Covers

Material

- * 35: Body: Polyamide DIN-EN ISO 1043-1 PA6 GFR30
- * Screw: Steel St 37
- * Pin : Steel St 37
- * 0: Uncoated
- * Hinge Rotation Angle: 180 °