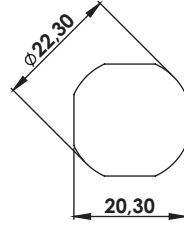
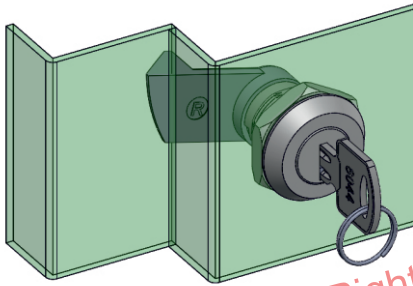


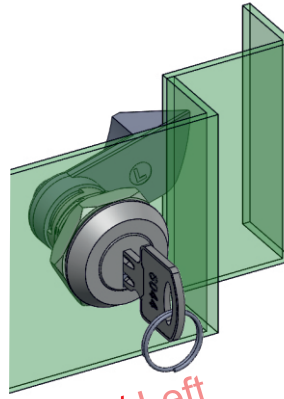
Dönme Açısı  
Rotation Angle



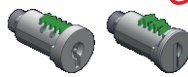
Saç  
Geçiş Ölçüsü  
Steel Cut Out



Sağ / Right



Sol / Left



Grup Kodu	Malzeme	Yüzey Kaplama	Fişe Kodu	Anahtar	Dil Kodu
Group Code	Material	Finish	Cylinder Code	Keys	Cam Code
KM10	.1	.2	.DD Fişeler için Sayfa:2 - Tablo: A For cylinder please check Page:2 - Table: A	.1 veya .2	.R veya .L
		.5		.1 or .2	.R or .L
	1: Zamak	2: Krom / Chrome 5: S. Boyalı / Black Coated		Adet / Pcs.	

## KM10

SİLİNDİRLİ DİLİ YAYLI KİLİTİ (Kilitleme Mesafesi 22mm.- SAĞ/SOL)  
CYLINDER LOCK - W/SPRINGY CAM (Lock Width: 22mm. - RIGHT/LEFT)



### Kullanım Alanları

- \* Elektrik Panoları
- \* Makine Kapakları

### Malzeme

- \* 1: Gövde: Zamak  
DIN-EN 1774-ZnAl4Cu1
- \* 2: Kaplama: Krom
- \* 5: Kaplama: Boyalı
- \* Dil(CC): Zamak  
DIN-EN 1774-ZnAl4Cu1
- \* R: Sağ / L: Sol

### Applications

- \* Electric Panels
- \* Machinery Covers

### Material

- \* 1: Body: Zamak  
DIN-EN 1774-ZnAl4Cu1
- \* 2: Finish: Chrome
- \* 5: Finish: Black Coated
- \* Cam(CC): Zamak  
DIN-EN 1774-ZnAl4Cu1
- \* R: Right / L: Left